

# ANNUAL REPORT



  
**GREENWICH**  
International Film Festival™

[WWW.GREENWICHFILM.ORG](http://WWW.GREENWICHFILM.ORG)

FISCAL YEAR: AUGUST 1, 2015 TO JULY 31, 2016





We loved the festival and hope to remain involved in future years to come!

~ Matthew Helderman, Producer of *Little Men*



# TABLE OF CONTENTS

4

Summary

13

Charity Partners

5

The Program

14

Financial Overview

10

Publicity

15

Community Opportunities

11

Audience

16

Special Thanks

12

Impact

18

Sponsors & Partners

**From Top Left.** Book signing at the From Book to Screen Panel, Spotlight On: John Turturro, Women at the Top panelists including Tonya Lewis Lee, Gretchen Carlson, Reena Ninan, Nancy Armstrong and Hannah Storm, LOL: The Big Business of Comedy panel, Samsung VR Lounge, Dan Cogan, Impact Partners, speaking at the Driving Social Change panel, GIFF leaders Ginger Stickel, Wendy Reyes, Colleen deVeer with Head of the Social Impact Jury, Kristin Davis



# SUMMARY



Attendees arriving at the screening of *The Fundamentals of Caring* at the Greenwich High School Performing Arts Center

**G**reenwich International Film Festival (GIFF) is a 501(c)3 non-profit organization that hosts a world-class film festival in Greenwich, CT, as well as events throughout the year. The festival's goal is to bridge the worlds of film, finance and philanthropy. As part of its mission, GIFF harnesses the power of film to serve the greater good by highlighting social impact issues and supporting important causes. The 2016 festival served as a platform for human rights initiatives through its programming and through the donation of proceeds to five charity partners.

GIFF's program featured inspiring social impact films, educational panels, and humanitarian awards. Since its inception, GIFF has been able to attract extraordinary art and film talent to the area. Financial donations to GIFF are used to showcase diverse, local and international film talent, to offer free community events, to give cash awards to filmmakers, and to provide financial assistance to charity partners.

# THE PROGRAM

## BY NUMBERS

# 53

Narrative and  
Documentary Shorts and  
Feature Films

# 2

Opening Night Films:  
*Little Boxes*,  
*The Anthropologist*

# 2

Closing Night Films:  
*Claire in Motion*,  
*Since: The Bombing on  
Pan Am Flight 103*

# 1

World Premiere: *Germans and Jews*

# 5

Films with Local Talent:

- Connecticut Premiere of *Newtown*
- *The Nature of the Beast*
- *The Fundamentals of Caring*
- *My Blind Brother*
- *Wifey Redux*
- *Osprey: Marine Sentinel*

# 50%

Half of GIFF films were  
social impact films  
showcasing a diverse  
range of issues facing the  
world today:

- Human Rights
- Cyberbullying
- Gun Control
- Women's issues
- Racial Injustice
- Prison Reform
- Religion
- Education Reform
- Self Help
- Environment
- Forced Migration

# 12

Countries Represented:  
China, France, Poland,  
Canada, Israel, Iran, New  
Zealand, United Kingdom,  
Spain, Colombia, United  
States, Argentina

# 8

Free Community Events:

Special Screenings:

- Oscar Contenders:  
*Spotlight*,  
*The Revenant*,  
*The Big Short*
- Holiday Screening of  
*A Christmas Story*
- Connecticut Premiere of  
*Billions*, followed by a Q&A  
with cast and crew

Educational Panels:

- Driving Social Change  
Through Investments In Film
- Women at the Top: Female  
Empowerment in Media
- From Book to Screen

“Congrats on  
a successful  
festival.”

-Jenna Anthony,  
ESPN Films





# THE PROGRAM

## SIGNATURE EVENTS



**From Top Left:** Betterridge on Greenwich Avenue, Changemaker Honorees Trudie Styler, Abigail Breslin, and Freida Pinto, Guests at the Awards Dinner at Richards, Master of Ceremonies Kathie Lee Gifford

## The Changemaker Gala

The Changemaker Gala is the most prestigious event of the Greenwich International Film Festival, honoring artists who've used their voice for positive social change. The 2016 Gala was held on June 10th with a cocktail reception at Betterridge, followed by an awards dinner at Richards. It celebrated three accomplished humanitarians, including Trudie Styler for her work with The Rainforest Fund, Freida Pinto for her support of Girl Rising, and Abigail Breslin for her support of the National Coalition Against Domestic Violence.

Thank you to our Master of Ceremonies, Kathie Lee Gifford, special guest Senator Richard Blumenthal and venue sponsors, Richards and Betterridge, for making the evening a memorable one for all who attended.



From Top Right: Musician Dar Williams, Musician John Popper, Head of the Social Impact Jury, Actress Kristin Davis, Guests enjoying Opening Night Party

## Opening Night Party

One thousand people came out to celebrate opening night at a star-studded party featuring musical performances by John Popper and Dar Williams, as well as an awards presentation by Kristin Davis, Head of the Social Impact Jury.

“It was a great festival and the films you selected were amazing! Looking forward to working with you guys again next year.”

- Mark Lindsay, Juror



# THE PROGRAM

## SPECIAL PROGRAMS



LOL: The Big Business of Comedy Panelists

## LOL: The Big Business of Comedy

A panel and after-party for 350 attendees featured some of the world's best comedic directors, producers and actors, including panelists Richard Brener (*Sex and the City*, *Wedding Crashers*), Chris Bender (*American Pie*), Peter Principato (*Wet Hot American Summer*, *Central Intelligence*), Stuart Cornfeld (*Zoolander*, *Tropic Thunder*), and Will Arnett (*Arrested Development*).

“It was a pleasure serving on the jury and being at the fest! You and your colleagues did a fantastic job in producing a terrific selection of films, talent, events and seamless coordination on all fronts!” ~ Asli Coker, Juror



# Spotlight On John Turturro

Veteran actor John Turturro discussed his craft and career at this conversational event which benefited Community Access, an organization that provides care to the mentally ill.

Spotlight On participant  
John Turturro



## Children's Acting Workshop

200 children and their parents gathered at the Greenwich Country Day School Performing Arts Center to learn tips from the trade and enjoy a Meet&Greet with *Jungle Book* star Neel Sethi, and *Bunk'd* star Peyton List, as well as acting coach Matt Newton, Casting Director Adrienne Stern, and Moderator David Gideon.



Children's Acting Workshop participants,  
Neel Sethi and Peyton List



Description of Picture

# PUBLICITY

## 852M

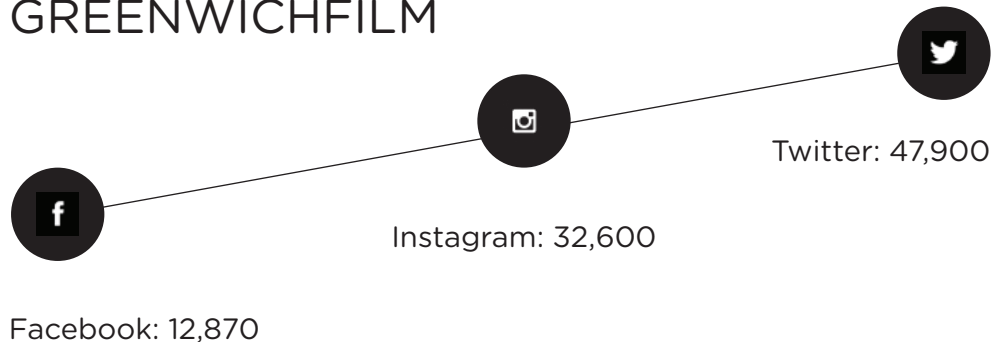
### MEDIA IMPRESSIONS

The festival generated 852 Million Media Impressions from a variety of international, national and local news outlets, including: ABC 20/20, The Today Show, Fortune, People, Daily Mail, New York Post, Associated Press, Crain's New York Business, Indie Wire, Deadline, Hartford Courant, Moviemaker Magazine, New Haven Register, Daily Voice, Connecticut Post, News 12 Connecticut, Good Morning Connecticut, WSHU, KLOVE, Greenwich Magazine, Greenwich Time, and Greenwich Sentinel.



## 93,370

### FOLLOWERS @ GREENWICHFILM



### WEBSITE

[www.greenwichfilm.org](http://www.greenwichfilm.org)

## 37,183

### UNIQUE USERS

## 104,199

### PAGEVIEWS



# AUDIENCE



## 8,500

### ATTENDEES

8,500 people attended the 2016 festival, with a total of 10,000 attending events throughout the year

## 99%

### OF ATTENDEES

would consider attending GIFF in the future. 100% would recommend GIFF to a friend

“Great program, very diverse and well-structured. Opening Night was fabulous and well-thought through. I love that local organizers were used to make this all happen.”

~ Festival attendee

### EDUCATION

98% have a college degree;  
45% have a graduate degree

### AGE

18 -24: 3%  
25 - 44: 18%  
45 to 64: 56%  
65+: 23%

### WHERE OUR AUDIENCE IS FROM

Greenwich: 45%  
Greater Fairfield County: 32%  
Westchester: 9%  
New York City: 3%  
Outside of New York/Connecticut: 11%

### INCOME

80% have a household income over \$100,000, with 25% over \$500,000

# IMPACT

**\$35,000**  
IN CASH PRIZES

\$35,000 in cash prizes were awarded to the winning filmmakers. Thank you to Kate & Jim Clark for underwriting the Shorts Awards, to the Ann Bresnan Foundation for underwriting the Best Social Impact Film Award, and to Jacob Burns Film Center for providing an Artist In Residence to the winner of the Best Social Impact Film.



**LITTLE MEN**  
IRA SACHS

**BEST NARRATIVE FEATURE  
FILM PRIZE**



**HOOLOGAN SPARROW**  
NANFU WANG

**BEST DOCUMENTARY FEATURE  
FILM PRIZE**

THE BILL & ANN BRESNAN FOUNDATION

**BEST SOCIAL IMPACT FILM PRIZE**



**BEFORE THE BOMB**  
TANNAZ HAZEMI

**BEST NARRATIVE SHORT  
FILM PRIZE**

UNDERWRITTEN BY KATE & JIM CLARK



**ANOTHER KIND OF GIRL**  
KHALDIYA JIBAWI

**BEST DOCUMENTARY SHORT  
FILM PRIZE**

UNDERWRITTEN BY KATE & JIM CLARK



# CHARITY PARTNERS

**GIFF more than doubled its financial support to charity partners in 2016. A portion of festival proceeds went to five human-rights based non-profit organizations, including:**



## RAINFOREST FUND

The Rainforest Fund supports programs that cover a range of issues from protection of civil and political rights of indigenous and tribal peoples, to the promotion and defense of their social, economic and cultural rights.

**[www.rainforestfund.org](http://www.rainforestfund.org)**



## NATIONAL COALITION AGAINST DOMESTIC VIOLENCE

The vision of NCADV is to create a culture where domestic violence is not tolerated; and where society empowers victims and survivors, and holds abusers accountable.

**[www.ncadv.org](http://www.ncadv.org)**



## GIRL RISING

Girl Rising uses storytelling to inspire action that gets girls into classrooms worldwide.

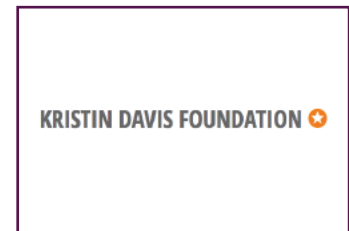
**[www.girlrising.com](http://www.girlrising.com)**



## COMMUNITY ACCESS

Community Access assists people with psychiatric disabilities in making the transition from shelters and institutions to independent living.

**[www.communityaccess.org](http://www.communityaccess.org)**



## KRISTIN DAVIS FOUNDATION

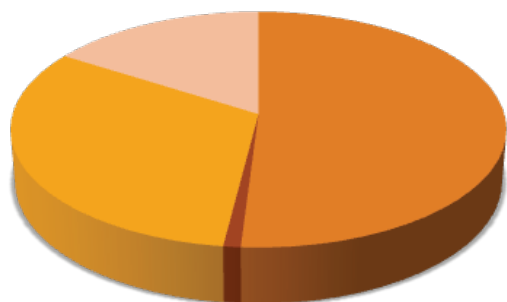
The Kristin Davis Foundation supports a variety of human rights-based charity organizations including the UNHCR – UN Refugee Agency.

# FINANCIAL OVERVIEW

MORE THAN  
**\$1M**  
IN REVENUE

Greenwich International Film Festival generated \$1.08 Million in revenue for the fiscal year August 1, 2015 to July 31, 2016. In addition to ticket and pass sales, paid sponsorships, submission fees, grants and financial donations, GIFF also received \$235,696 of in-kind donations. In-kind donations include media sponsorships, restaurants, alcoholic and non-alcoholic beverages, marketing materials, car and airline transportation, editing services, photography, decorations, and more.

\*The financial information below does not include in-kind donations. Any budget surplus is used to fund future community programs.



## *Earned Revenue*

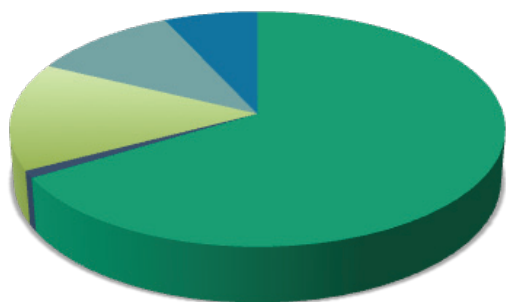
- Tickets & Pass Sales
- Submission Fees

## *Contributed Revenue*

- Sponsorships
- Grants & Donations

\$551,496	51%
\$12,863	1%
\$343,665	32%
\$172,723	16%

**\$1,080,747 100%**



## *Program Expenses*

- Festival Development & Program
- Additional Events & Screenings

## *Other Expenses*

- Office & Administrative
- Marketing, Communication & Technology
- Charitable Donations

\$676,691	64%
\$11,630	1%
\$185,416	18%
\$95,868	9%
\$86,000	8%

**\$1,055,604 100%**

\*This is an unaudited financial report. For a copy of GIFF's audited financial statements, please contact Ginger Stickel or Maryann Ghirardelli at maryann@greenwichfilm.org or 203-717-1800.



# COMMUNITY OPPORTUNITIES

It takes a village to put on a world-class film festival. GIFF is grateful for the support of its volunteers, staff, interns and community partners who help to make it all happen.

## 130 VOLUNTEERS

Volunteers ensure the best film-going experience possible for our patrons, filmmakers, jurors and attendees. 130 volunteers help to staff the festival, assisting with press & industry, box office, venues, event production, admissions, and more.

## 19 INTERNSHIP PROGRAM PARTICIPANTS

This year, GIFF expanded its internship program to include high school students. GIFF recruited interns from 4 high schools and 9 colleges, offering training opportunities for students in a variety of functions including: marketing, social media, sponsorship, programming, design, videography, photography, virtual reality, travel coordination, event planning, and more.

**High Schools:** Greenwich High School, Brunswick School, Weston High School, New Canaan High School

**Colleges:** SUNY Purchase, Manhattanville, Sacred Heart University, Quinnipiac, Fairfield University, Wellesley College, The Fashion Institute of Technology, Boston College, Dartmouth College

## 13 COMMUNITY PARTNERS

Community partners help GIFF achieve a greater voice in Greenwich and beyond. GIFF has created strategic partnerships with a number of art and non-profit organizations that are mutually beneficial. Partnerships offer a range of opportunities from marketing to financial. Thank you to our 2016 community partners.

AJC  
Avon Theatre  
Boys & Girls Club  
Bruce Museum  
Caramoor  
Connecticut Against Gun  
Violence  
Cos Cob TV & Audio

Focus on French Cinema  
GCDS  
Greenwich Academy  
Greenwich Arts Council  
Greenwich High School  
Greenwich Library  
ICC Greenwich  
Jacob Burns Film Center

JCC  
Parking Production  
Ridgefield Playhouse  
Sebass Event & Ent.  
the nantucket project  
The Palace  
Town of Greenwich  
YWCA

# SPECIAL THANKS

## BOARD OF DIRECTORS

Carina Crain  
Colleen deVeer  
Susan Smith Ellis  
Julie Fareri  
Avram Ludwig  
Jim Matthews  
Gianna Palminteri  
Clay Pecorin  
Wendy Stapleton Reyes  
Daphne Richards  
Christian Simonds  
Ginger Stickel  
Mark Teixeira  
Carolyn Westerberg

## EXECUTIVE BOARD

Richard Brener	Michael Imperioli
Jenna Bush-Hager	Vikki Karan
Jim Cabrera	David Levien
Kimberly Clarke	Clea Newman
David Duchovny	Chazz Palminteri
Doug Ellin	Daphne Richards
Dennis Ever	Deborah Royce
Bobby Friedman	Tom Scott
Craig Gering	Bill Shipsey
Kathie Lee Gifford	Adrienne Stern
Jared Ian Goldman	Jeb Stuart
Colin Hanks	Emily Wachtel
Don Jenner	Ali Wolfe

## INTERNS

Danielle Brooks  
Alexander Fajardo  
Juan Garzon  
Malcolm Grayson  
Juliana Hartman  
Jenna Hascher  
Lindsey Hascher  
Lizzie Jones  
Jenny Levine  
Scarlett Machson  
Kayla O'Brien  
Caleb Osemobor  
Agnes Pompeii  
Nolan Ralph  
Samantha Schechter  
Luke Stannard  
Rebecca Stroud  
Naimarie Vargas  
Marisa Winckowski

## FESTIVAL STAFF

Carina Crain, Founder  
Colleen deVeer, Founder and Director of Programming  
Wendy Stapleton Reyes, Founder and Chairman of the Board

Ginger Stickel, Chief Operating Officer  
Maryann Ghirardelli, Office Manager  
Sebastian Dostmann, Producer  
Rachel Langus, Programmer  
Lauren Clayton, Graphic Designer  
Laurel Weill, Box Office Manager  
Lindsey Hascher, Social Media Coordinator & VIP Liaison  
Kiel Stango, Festival Coordinator  
Alexis McCoy, Volunteer Coordinator  
Nicole Pesce, Sponsorship Fulfillment Manager  
Bears Fonte, Programming Consultant  
Ian Callanan, Website Developer  
Greg Katz, Venue Manager  
Whitney Longworth, Venue Manager  
Ivy Moylan, Print Traffic Coordinator  
Samantha Schechter, VR Venue Manager  
Kayla O'Brien, Sponsor Coordinator



# | ANNUAL GIVING

## PLATINUM FOUNDING MEMBERS

Crain Family Foundation  
The Fareri Family  
Chuck and Deborah Royce  
Ras and Kristyna Sipko  
Stapleton Family Foundation  
Tex and Co.

## FOUNDING MEMBERS

Bradshaw-Mack Foundation\*  
Barry and Barbara Carroll \*  
Chris and Carina Crain\*  
Crain Family Foundation\*  
Colleen and Kipp deVeer  
The Fareri Family\*  
Pamela and David B. Ford\*  
Jim and Jenny Matthews\*  
Donald and Muffy Miller  
Wendy and Diego Reyes  
Chuck and Deborah Royce\*  
Ras and Kristyna Sipko\*  
Stapleton Family Foundation\*  
Eleanor and John Sullivan\*  
Tex and Co.\*  
Victoria and Mike Triplett\*

## CINEPHILES

The Bradshaw-Mack Family Fund  
Kate and Jim Clark  
The Lauder Foundation -  
Leonard & Judy Lauder Fund  
Shari Lampert  
Jim and Jenny Matthews  
Clay and Eva Pecorin  
Michael and Krystal Sachs  
Whitney and Dave Schwartz  
Jeff and Valerie Wilpon

## PREMIER PASSHOLDERS

Nancy and Tim Armstrong  
Michael and Nelly Bly Arougheti  
Mike Bodson  
Jim and Ginge Cabrera  
Mr. and Mrs. Gordon Caplan  
Barry and Barbara Carroll  
Chris and Kimberly Clarke  
Vicki and David Craver  
CLEver Photos  
Catherine and Michael Farello  
Brian and Helen Fitzgerald  
David and Pamela Ford  
Scott and Icy Frantz  
Robert Friedman Bungalow Media + Entertainment  
Darrell and Robin Harvey  
Ken Hubbard and Tori Dauphinot  
Joseph and Stephanie LaNasa  
Floencia and Joseph Lipton  
John and Jennifer Weis Monsky  
Sally and Tom Neff  
Newman's Own Foundation  
Brad and Hadley Palmer  
Emma and Mark Pennington  
Mr. and Mrs. Jeffrey Pribyl  
Sue Rogers  
Jane and Paul Shang  
Christian Simonds  
Riann Smith  
Carl and Ginger Stickel  
Victoria Triplett  
Carolyn and Stephen Westerberg  
Susan Yonce

\* Denotes 2015 Supporters

# SPONSORS & PARTNERS

## 2016 SPONSORS

90+ Cellars	Frost   Productions	Pernod Ricard
Absolut Elyx	Getty Images	Pure Barre
Andersen Tax	GIFFT	Pure Insurance
AQR	GLOsquad	Renny & Reed
ASHA	Graham Capital	Richards
Barton & Gray Mariner's Club	Granoff Architects	Roger Ferris & Partners
Betteridge	Greenwich Staffing	RR Donnelly
Big Picture	Hearst Media	Sam Bridge
Camuto Group	Hollywood Pop Gallery	Samsung
Cavalier Galleries	Hospital for Special Surgery	Shoreline
Charles Schwab	Inspirato	Stella Artois
CMI Media	J House Greenwich	The Avon Theatre
Coldwell Banker Previews Int'l	JPMorgan Chase & Co.	The Balm Cosmetics
Crain	L Catterton	UBER
DECD State of Connecticut	Lillian August	Val's Putnam Wines & Liquors
Douglas Elliman Real Estate	Moët & Chandon	WABC TV
Earthshaker Wines	Moffly Media	Wheels Up
Empire City Casino	NEBCO	WhoSay
First Republic Bank	Pepsi	WSHU

## 2016 RESTAURANT & BEVERAGE PARTNERS

Alta Neve	Little Pub	Sugarfina
Bar Taco / Barcelona	Match / Nom-eez / Donut Crazy	The National
DeCicco & Sons Events & Cuisine	Mill Creek Vineyard & Winery	Treat House
Fortina	Mionetto	Tredici North
HooDoo Brown Barbeque	On the Marc	Uncorked
	South End	

“The reviews in the New York Times, Village Voice, Daily Beast, Salon.com and Hollywood Reporter have been great. We are on our way and will always be thankful to you guys and the AJC. We are so lucky to have you as advocates. Thank you so much!”

~ Tal Recanati, Executive Producer of *Germans and Jews*





**From Top Left:** Tonya Lewis Lee speaking at the Women at the Top panel, Rob Burnett & Paul Shaffer at the premiere of *The Fundamentals of Caring*, GIFF Founders Wendy Stapleton Reyes, Carina Crain & Colleen deVeer, Richards window display, Connecticut Premiere of *Newtown*, Musician Blessing Offor, From Book to Screen panelists including Margaret Nagle, Chris Clark, Jessica Knoll, Kathie Lee Gifford, Lacy Lynch, Adriana Trigiani, and David Ebershoff

**WWW.GREENWICHFILM.ORG**

**55 OLD FIELD POINT ROAD, GREENWICH CT 06830**